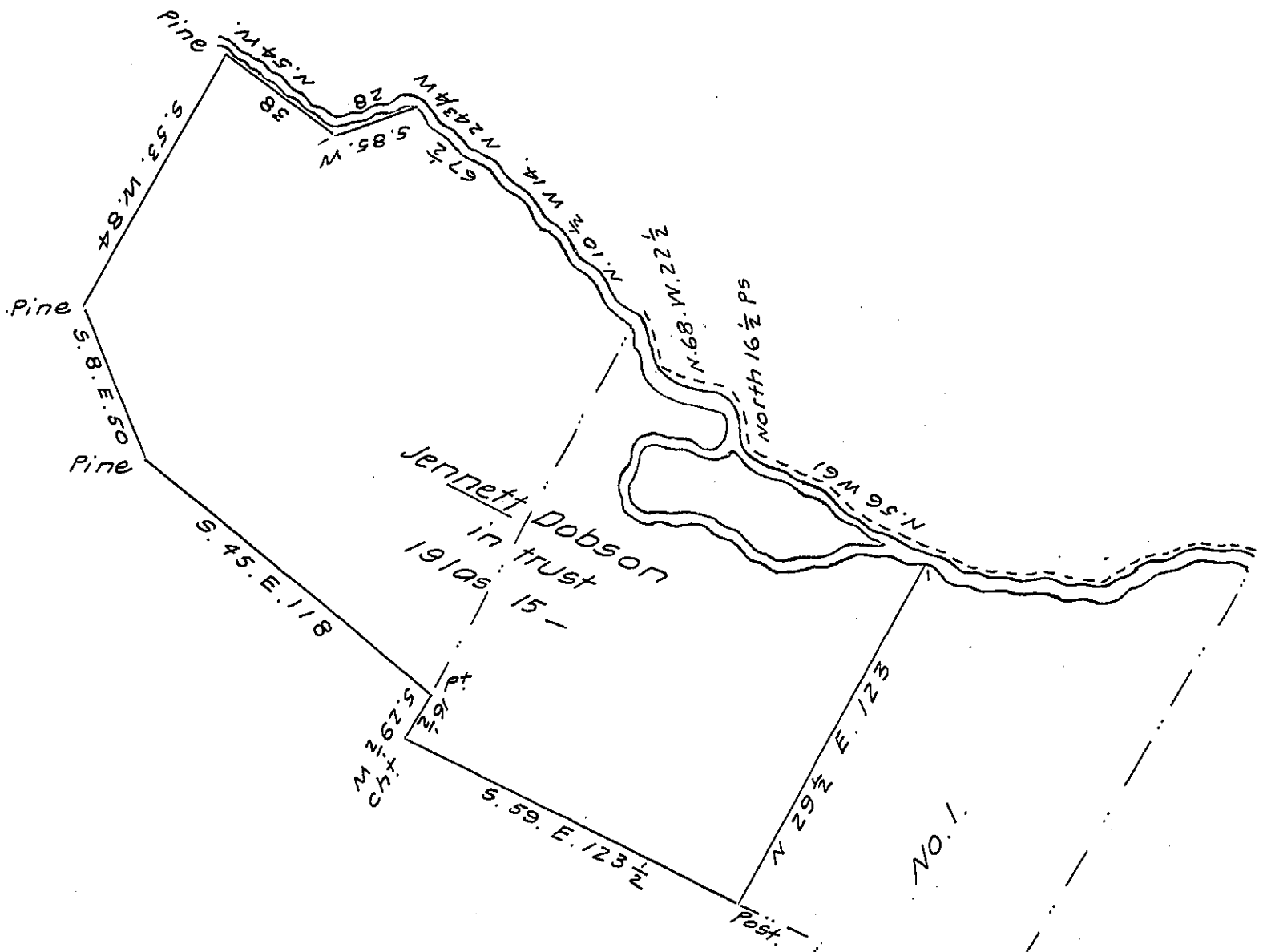


FORM NO 1.



A Draft of A Tract of land situate on the South Side of Dunnings Creek in the township and County of Bedford containing one hundred and ninety one acres and fifteen perches and allowance of six per cent for roads &ca. Surveyed for Jennett Dobson, In trust, on order No. 5175, dated the 7th day of September, 1768.

James O'Connor D.S.

To Gabriel Heister Esqr. S. G.

No 1. Represented by the dotted lines is a draft of a tract of land surveyed for Francis Campbell, on Warrant dated the 31st day of May 1763. This tract interferes ninety six acres and ninety nine perches with the Jennett Dobson Survey. Francis Campbell conveyed to Robert Tate who conveyed to Griffith Mickle from whom George Lucas (who claimed under Jennett Dobson) gained the amount of the interference at law and the same is now owned by George Lucas Francis Campbell, Pat'd.

IN TESTIMONY that the above is a copy of the original remaining on file in the Department of Internal Affairs of Pennsylvania, made conformably to an Act of Assembly approved the 16th day of February, 1833, I have hereunto set my Hand and caused the Seal of said Department to be affixed at Harrisburg, this twenty ninth day of JULY 1908

Henry Howe
Secretary of Internal Affairs.